

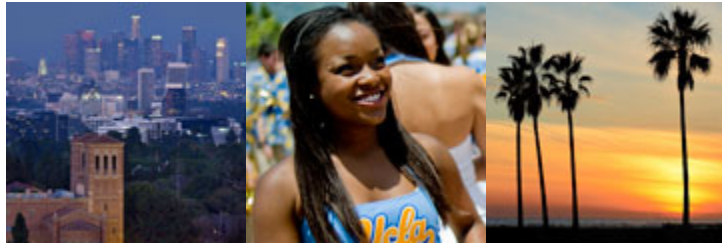
2012-2013 Financial Aid Handbook

UCLA
Financial Aid Office

A129J Murphy Hall Box 951435, Los Angeles, CA 90095 www.fao.ucla.edu finaid@saonet.ucla.edu 310.206.0400

INSIDE:

- 2 Applying for Aid
- 2 Eligibility Criteria
- 3 Summer Aid Information
- 4 Submitting the FAFSA
- 5 Determining Financial Need
- 6 Special Circumstances
- 7 The Financial Partnership
- 8 Grants
- 8 Financial Aid Programs
- 8 Blue & Gold Opportunity Plan
- 10 Loans
- 12 Scholarships
- 13 Work-Study
- 13 Maintaining Financial Aid Eligibility
- 14 Directory



**UCLA FAFSA
PRIORITY FILING
DEADLINE
March 2**

**UCLA SCHOOL CODE
001315**



The Financial Aid Handbook is designed to familiarize you with the financial aid application process. The handbook contains information on how to apply, how your need is determined and what types of aid are available. This information will be helpful to prospective and continuing students and their families who are interested in applying for financial aid.

APPLYING FOR AID

Free Application for Federal Student Aid (FAFSA)

To apply for financial aid, you must complete a FAFSA. Applications are available online at www.fafsa.gov in January and should be completed by the **March 2 priority filing deadline** in order to receive optimum consideration for limited financial aid resources.

Before attempting to complete the FAFSA, go to www.pin.ed.gov and obtain your federal PIN. The federal PIN will allow you to sign your application electronically, and if you are a continuing applicant, access your FAFSA Renewal on the web. Parents of dependent students should also obtain a PIN so that they too can sign the FAFSA online. We recommend that you file your FAFSA electronically and use the IRS data retrieval process. Students who prefer to complete a paper FAFSA can print out the form in a PDF format at: www.fafsa.gov/options.htm.



Eligibility Criteria

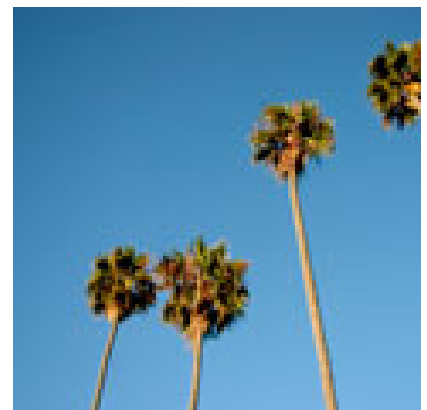
In order to receive financial aid, you must be a US citizen or eligible non-citizen, have a valid social security number, be registered with the Selective Service, if required, be enrolled at least half-time in an eligible program, not be in default nor owe an overpayment of any federal funds, have earned a high school diploma or the recognized equivalent and make satisfactory academic progress. If you are not a US citizen or permanent resident but meet AB131 criteria, you can receive limited aid. Please see “Undocumented Students” information on Page 4.

California Grant (CAL Grant) Application

To apply for a Cal Grant, you must file the FAFSA by March 2. If you are a first time applicant, you must also provide the California Student Aid Commission (CSAC) with a completed GPA Verification Form by March 2. UCLA will electronically submit GPA verification for continuing students who have completed 36 units or more. *Students must have their previous school verify their GPA if they have fewer than 36 units.*

To obtain a GPA Verification Form, contact the following:

- High school guidance counselor, or
- California Student Aid Commission: www.csac.ca.gov.



Applying for Scholarships

Entering students need to apply for need-based scholarships using the *University of California Application for Undergraduate Admissions and Scholarships*. The admission and scholarship deadline for entering students is November 30. In addition, your FAFSA must be filed by March 2 to establish financial need for the academic year.

Continuing UCLA students who have a cumulative GPA of 3.5 or greater, may apply for need-based scholarships through the *Undergraduate Scholarship Application for Continuing Students* available at www.fao.ucla.edu. The submission deadline is March 2. All students must also file a FAFSA by March 2 to establish financial need.

Summer Aid

Summer financial aid is available to all admitted UCLA students enrolled at least half time in an approved program. In addition to completing the FAFSA by March 2, you will also need to complete a supplemental Summer Application. Students applying on time will be considered for federal, state and university grants, loans and work-study. Limited summer aid is available for late applicants. *Financial aid is only available for one summer program per year.*



The Summer Session Aid Application

UCLA Summer Session applications are available on line at www.fao.ucla.edu starting April 1 and must be submitted by April 30 for priority consideration. Aid is also available to UCLA students attending a summer session at another University of California campus, Summer Travel, Summer Institute, and EAP programs. Application timelines and availability of funds for those programs vary. Please check our web site (www.fao.ucla.edu) in February/March for additional summer aid information and applications.

Student Athletes



Eligible student athletes who also completed the FAFSA application will receive their academic year eFAN's by mid-August once the Financial Aid Office receives information from the Athletic Department regarding athletic scholarships. Financial aid applicants who receive athletic scholarships from UCLA Athletic Department will be awarded financial aid to cover their cost of attendance in accordance with NCAA Regulations. All Pell Grant eligible student athletes should contact the UCLA Athletic Department (located in the JD Morgan Center) about the NCAA Special Assistance Fund and/or any questions concerning their athletic scholarship.

International Students

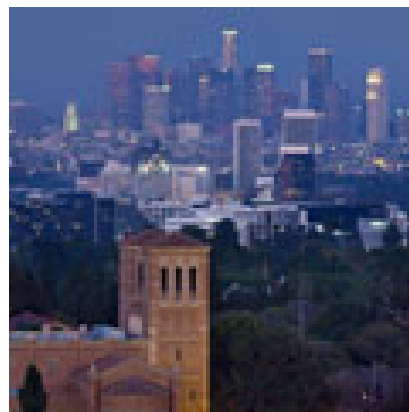


International students are ineligible for federal financial aid. However, undergraduate international students in their second and subsequent years at UCLA can apply for limited university grant funding by filing an *International Student Financial Aid Application* with our office. The application will be available at www.fao.ucla.edu, in January through March 2nd for the upcoming academic year. In addition, if the student possesses an F-1 Visa and has a co-signer who is a US Citizen or a permanent resident, they may qualify for private student loan assistance to cover their cost of attendance. Please contact the Financial Aid Office for more information.



AB130 and AB131 Applicants

The passage of the California Dream Act of 2011 (AB130 and AB131) allows students (including those who are undocumented) attending UCLA, who are exempt from paying nonresident fees under AB540 to be eligible to receive scholarships derived from non-state funds effective January 1st, 2012 and to receive state and university funds effective January 1st, 2013. In order to be eligible for financial aid or scholarships, students must complete the 12-13 [California DREAM Application](#). The CA DREAM Application should be completed only by students who are ineligible to complete a FAFSA and will be used to determine need. Students are encouraged to seek out private scholarships since funding is limited.



SUBMITTING THE FAFSA

The Application Process

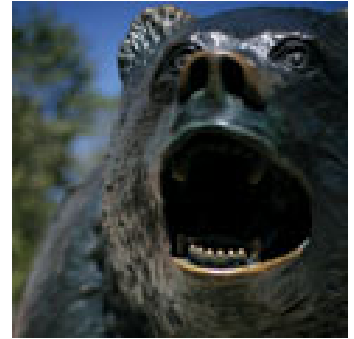
Students who complete their FAFSA on the Web will receive a confirmation number at the time they submit their application. The confirmation page can be printed out or the applicant can have this page sent to their e-mail address as verification of having completed the FAFSA. The federal processor will also send an e-mail verifying that the application was received and that it will be forwarded to the school(s) listed on the FAFSA. The email will also provide instructions on how the FAFSA data can be accessed in order to verify information or to make changes.

It is important that you file your FAFSA before March 2 priority filing deadline. Estimated tax information should be provided, if your tax returns are not available by March 2nd. FAFSA information can be corrected once tax returns have been filed. The IRS Data Retrieval process will allow you to update your 12-13 FAFSA with tax information submitted to the IRS. Consult the FAFSA website (www.fafsa.gov) for additional information.

When FAFSA data is submitted to the federal processor, student information will be verified by a series of federally mandated data matches (Social Security Number, date of birth and name information, Selective Service status, Department of Homeland Security status, citizenship status and default information) before being forwarded to UCLA electronically. It takes 3-5 business days for UCLA to receive electronic FAFSA information from the federal processor. If a student does not pass some of the data matches, UCLA will follow up for additional documentation via e-mail.

The Verification Process

Although exempt from Federal Verification selection, every year UCLA verifies information provided by a portion of the student population receiving financial aid. If you are selected for UCLA's verification process, you will be sent a request via e-mail to complete and submit the *UCLA Verification Form*. Please be prepared to submit additional documentation with the verification form, such as a federal tax return for example.



Housing Status Verification

The Financial Aid Office may need to confirm that the housing status you reported on the FAFSA is correct. Since the request for this information can come at any time during the year, please make sure that you keep your dorm contracts, rental agreements or leases, and cancelled checks made payable to the renting agent on hand. Adjustments to your Cost of Attendance, reduction of your awards, and/or billing can result from an improperly reported housing status.



Completing Your File

Before you can be awarded financial aid, you must have a complete file, which includes FAFSA data and any additional information requested by the Financial Aid Office. You can check the status of your file online at www.fao.ucla.edu/myfao/. Once your file is complete, it will be reviewed by a counselor and financial aid will be offered to you. A Financial Aid Notification (eFAN) will be made available specifying the award type and amount, for which you are eligible. An email will be sent to you when your eFAN is available.

DETERMINING FINANCIAL NEED

The process of determining your eligibility for financial aid, commonly referred to as *need analysis*, has been legislated by the U.S. Congress using the information supplied in the FAFSA. If the need analysis shows that the cost of education exceeds the amount you and your family can contribute, you will qualify for financial aid based on need. Non-need based loans are also available even if your family contribution exceeds your cost of education.





Cost of Education

A standardized set of budgets is used as the basis for determining the cost of attendance at UCLA. The budgets vary based on your living arrangements while in school, from living with parents or relatives, to living on campus, to living off-campus (away from family). For an undergraduate, approximate costs of attending UCLA for a nine-month academic year are: \$22,000 for students living with family, \$28,000 for living off-campus and \$30,500 for living on-campus. An additional \$23,000 (approximate) will be charged to out-of-state students for non-resident tuition.

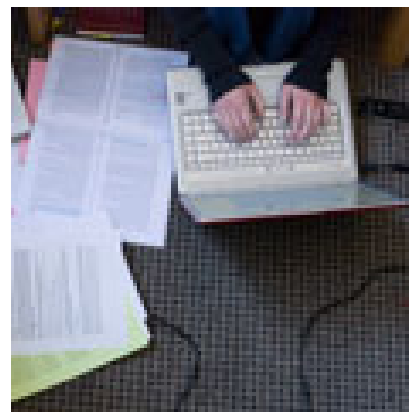
Financial Aid Office publishes Cost of Education information for graduate students at http://www.fao.ucla.edu/fao_information_costs.htm. Graduate and Professional School estimate budgets may vary based on specific graduate programs. Graduate and professional students should contact the Graduate Division for additional information.

Expected Family Contribution (EFC)

The EFC is the amount that you and your parent(s) are expected to contribute towards your education. The need analysis formula utilizes your parents' income, assets, savings, taxes and other mandatory living expenses to determine the parents' contribution. In addition, your parents' ages, number of dependents in the household, and the dependents enrolled in college are considered. Student contribution is derived by analyzing your income and asset information. The EFC figure *is not an actual amount that you (or your parents) have to pay*, but it is an approximation of how much your family should reasonably be able to contribute towards your educational expenses during the academic year. If at the time of completing the FAFSA you were required to provide only your and your spouse's income and asset information, the EFC will be calculated using these resources.

SPECIAL CIRCUMSTANCES

If your or your parents' financial situation changes after you have filed the FAFSA or at any time during the academic year, you should submit a letter explaining your special circumstances along with supporting documentation to the Financial Aid Office. Changes in your financial situation include, but are not limited to, loss of employment, disability, illness, separation, divorce, or death of a parent or a spouse. To appeal, complete the Petition to Use Projected Year Income (available at www.fao.ucla.edu) and submit it to the Financial Aid Office.



Your appeal will not be considered without supporting documentation.

Students who have been classified as dependent according to the criteria established by the Federal Government may petition for *reclassification to independent status* based upon documented extenuating circumstances. To appeal for independent student status, complete a Petition for Independent Status (available at www.fao.ucla.edu) and submit it to the Financial

Dependent students whose parents are unwilling to provide parental information on the FAFSA may be eligible for Unsubsidized Direct Loan assistance only. The amount of the Unsubsidized Loan will vary depending upon the students' academic grade level. Please contact the Financial Aid Office for additional information.

Students whose marital status changes during the academic year should provide the Financial Aid Office with a copy of their marriage certificate so that we can update their FAFSA information. For dependent students, changes in their marital status will change their dependency status and eligibility for aid. Additional documentation (ex: student and spouse's tax returns forms) may be requested by the Financial Aid Office.

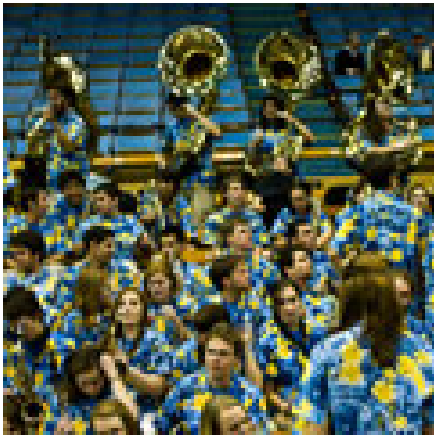
If you (or your parent) were registered in a Domestic Partnership at the time you completed your FAFSA, you may be eligible for a recalculation of your eligibility for university funds based on your and your domestic partner's (or your parent's partner's) resources instead of the income/asset information reported on the FAFSA. Please review the Domestic Partner Form available on our web site (www.fao.ucla.edu) and submit it to our office, if applicable.



THE FINANCIAL PARTNERSHIP

Paying for the cost of a UC education requires a partnership among parents, students, and the University; each partner has responsibilities to fulfill in meeting that cost. It is essential that parents fulfill their part of the partnership, otherwise students will have to carry a heavier financial burden. Parents usually combine current income, savings, and borrowing from the Direct Parent PLUS Loan Program or from other sources to meet their share of the expected parent contribution. Students are expected to meet part of their cost through a combination of earnings and borrowing. This "loan/work expectation" is a variable one, and takes into account students' budget, taking advantage of scholarship programs, saving for college expenses before enrolling, and living at home during the summer to maximize savings. UCLA administers a wide variety of student support programs as outlined in the next portion of this publication. Students' workload and amount of educational debt is reviewed as well, to help ensure that neither impedes steady progress towards degree completion or the ability to meet loan repayment obligations.

Please note that federal education tax credits may benefit you or your parents. Tax credits are tied to the tuition and fees paid for college attendance. Please review the American Opportunity Tax Credit information available at www.irs.gov. If you or your parents are interested in learning whether these tax credits apply to your financial situation, you should consult with a tax advisor.



FINANCIAL AID PROGRAMS

Blue and Gold Opportunity Plan

If you are an undergraduate student attending a University of California, the Blue and Gold Opportunity Plan will cover your system-wide fees. The plan will combine all sources of scholarship and grant awards you receive (federal, state, university and private) to count toward covering your fees. Blue and Gold students with sufficient financial need can qualify for even more grant to help reduce their cost of attendance. To be eligible for the Blue and Gold Opportunity Plan, you must:

- Be a California Resident.
- Submit a Free Application for Federal Student Aid (FAFSA) by the March 2nd deadline and provide any additional information that may be requested by the Financial Aid Office.
- Apply for a Cal Grant (see page 3 of the Handbook).
- Demonstrate total income below \$80,000* on 12-13 FAFSA with financial need, as determined for federal need-based aid program.
- Be in your first four years at UCLA if admitted as a freshman, three years if admitted as a sophomore, two years if admitted as a junior or one year if admitted as a senior.
- Meet other basic campus requirements for UC grant aid (ex: be enrolled at least half-time, meet Satisfactory Academic Progress standards, not be in default on student loans, etc.)

Once your financial need and eligibility for Blue and Gold Opportunity Program is determined, based on the need analysis, your resulting financial aid eligibility can be covered by different types of awards listed on the following pages.

*Total income threshold for 12-13 is subject to change.

Grants



Grants (Federal Pell Grant, Cal, University Grants and Scholarship Recognition Awards) require enrollment in 12 units in order to maintain maximum eligibility. Enrollment below 12 units on the census date (at the end of third week of classes) will result in reduction of and billing for these awards.

California Grant Programs are state-funded educational opportunity programs that assist students through a variety of awards. For each program listed on the following pages, a student must meet all eligibility criteria, outlined on page 3 of this handbook.

Cal Grant A provides grant funds to help pay tuition/fees for California residents at qualifying institutions offering undergraduate academic programs. Awards are based on need

and grade point average. If you qualify for a Cal Grant A and you choose to attend a California Community College first, you can reserve your award for up to two years until you transfer to a tuition/fee charging college.

Cal Grant B provides awards for students from low-income families. The awards are to be used to help pay your tuition, fees and access costs. The Cal Grant B award during your first year is for access costs only (\$1551), including expenses for transportation, supplies and books. Beginning with the second year of your Cal Grant B benefits the award also helps pay for tuition and fees. Note: Cal Grant A and B Entitlement awards are for High School graduates under the age of 28 by December 31 of the award year with minimum GPA of 3.0 for A and 2.0 for B.



Cal Grant A and B Competitive awards are similar to the entitlement awards, except they are not guaranteed. Each year only a limited number of new awards are available to those students who did not receive an entitlement award. The awards are for students from low income and disadvantaged families with a minimum GPA of 3.0. Cal Grant A and B recipients who plan to enroll in a teaching credential program may have their funding extended an additional year for a teaching credential program. Recipients should apply as early as possible after receiving their bachelor's degree by completing the Request for Teaching Credential Program (G-44 form) available at www.csac.ca.gov.

Please be advised that any Cal Grant award offer is tentative and subject to final approval of the State Budget Act. Continuing students who are Cal Grant recipients must meet income and asset criteria and have sufficient unmet need in order to retain Cal Grant eligibility.



Federal Pell Grants are based on exceptional need and awarded to undergraduate students who are U.S. citizens or eligible non-citizens and who have not earned a Bachelor's degree. Students who file the FAFSA are automatically considered for Pell Grants. For 12-13, full time awards start at \$602 with a maximum award of \$5,550. For students enrolled less than full time, Pell Grants are reduced. Pell grant eligibility is limited the equivalent of 18 quarters.

Federal Supplemental Educational Opportunity Grants (FSEOG) are federally funded awards awarded to undergraduate students who completed their FAFSA before the March 2nd priority filing deadline and who are citizens or permanent residents. Awards are based on financial need, and range from \$100 to \$4,000. Preference is given to Pell Grant and Cal Grant recipients.

Scholarship Recognition Awards are one-year, non-renewable scholarships awarded to entering students who completed their FAFSA before the March 2nd priority filing deadline. These awards recognize stellar academic achievement as evidenced by admission to UCLA and are offered to students who demonstrate significantly high financial need. *Since these scholarships are offered for one year only, students who continue to demonstrate financial need will be funded with University Grants for their future years of study.*



State University Grants (SUG) & UCLA Grants are awarded to undergraduate students who completed their FAFSA before the March 2nd priority filing deadline and who are citizens or eligible non-citizens. In January 2013, these grants will also be available to students who are ineligible to complete the FAFSA but qualify for AB540 nonresident tuition exemption (including those who are undocumented.) Awards are based on financial need.

University Fee Grants are awarded to assist with the annual fee increase (if there is one). These grants are awarded to on-time, undergraduate applicants who are citizens or permanent residents. In January 2013, these grants will also be available to students who are ineligible to complete the FAFSA but qualify for AB540 nonresident tuition exemption (including those who are undocumented.) This award is available to families with total income below \$120,000 who do not qualify for Cal Grant funding and whose fees are not already covered with other grants.



Teach Grants are non need-based federal grants that provide up to \$4,000 per year to students who are enrolled full time. Reduced eligibility is calculated for less than full-time enrollment in an eligible program. Students must agree to teach in a high need field at a low income elementary or secondary school as a highly qualified teacher. A student must be an undergraduate senior enrolled in

UCLA California Teach Program or a graduate student enrolled in UCLA's Teacher Education Program and working toward a credential in Science, Math or Special Education in order to qualify for a Teach Grant. 3.25 GPA is required. For additional information about Teach Grants, please contact UCLA's California Teach Program or the Graduate School of Education.

Loans

Direct Loan Program (DL) The Direct Loan Program consists of low-interest subsidized and unsubsidized loans funded by the federal government. Loans are available to undergraduate, graduate, and professional students who are U.S. citizens or permanent residents and to parents of undergraduate students.

ANNUAL DIRECT LOAN LIMITS			
	SUBSIDIZED LOAN	UNSUBSIDIZED LOAN <i>(Includes any Subsidized funds awarded)</i>	ADDITIONAL UNSUB <i>(For independent students and dependent students whose parents are denied a PLUS loan)</i>
FRESHMEN	\$3,500	\$5,500	\$4,000
SOPHOMORE	\$4,500	\$6,500	\$4,000
JUNIOR/SENIOR	\$5,500	\$7,500	\$5,000
GRADUATE STUDENT	N/A	\$20,500	N/A

Direct Subsidized Loans are long-term, low-interest loans that are funded by the U.S. Department of Education. Beginning July 1, 2012, subsidized loans are only available to undergraduate students with financial need. The annual Direct Subsidized Loan amount is based on the student's grade level and financial need. For loans first disbursed between July 1, 2011 and June 30, 2012, the interest rate is fixed at 3.4% and loan repayment and interest will begin

six months after graduation or dropping below half-time enrollment. For loans first disbursed between July 1, 2012 and June 30, 2013, the interest rate will be fixed at 6.8% and loan repayment will begin six months after graduation or dropping below half-time enrollment while interest accrual will begin immediately after graduation or dropping below half-time enrollment.

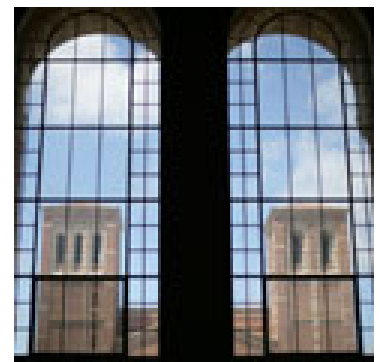
Direct Unsubsidized Loans are available to all eligible students regardless of income. Interest accrues from the date of disbursement, but the extra costs of accrual can be avoided by making regular interest payments while in school. Interest rate is fixed at 6.8% for undergraduate and graduate borrowers.

Direct PLUS Loans are designed to help graduate students and parents of undergraduate students meet their educational costs. Graduate students and parents may borrow up to the cost of education for the academic year, less any other financial aid received. PLUS loans are available only to borrowers who do not have adverse credit histories. The interest rate is fixed at 7.9%. Repayment begins 60 days after the loan is fully disbursed. Parent borrowers have the option of deferring payment until after their dependent student (Parent PLUS) graduates or drops below half time enrollment. Graduate students do not enter PLUS repayment while enrolled at least half time. Please go to www.StudentLoans.gov for additional information on repayment options and terms.

Federal Perkins Loans are available to on-time undergraduate and graduate applicants who are citizens or eligible non-citizens. The loan limit is \$5,500 per academic year for undergraduate students and \$8,000 for graduate and professional students. *The actual award amount may be less based on annual funding and UCLA's institutional awarding policy.* Undergraduates may borrow up to an aggregate total of \$27,500. Graduate and professional students may borrow up to \$60,000, which includes undergraduate Federal Perkins Loan amounts. The loan interest rate is fixed at 5%. Loan repayment and interest accrual begins nine months after graduation or less than half-time enrollment.

Private Loans (also called Alternative loans) are available to students who have received the maximum award amounts under the Direct Loan Program and require additional funding. These loans are funded by banks and private lending institutions. The interest rates and repayment terms are not federally regulated and will vary. These loans must be certified by the Financial Aid Office before funds can be disbursed. For additional information, please refer to the *Private Loan Guide* and *Private Lender Lists* available at: <http://www.fao.ucla.edu/publications.html>.

Short-Term Loans are interest-free loans available to all enrolled students who have fully paid fees and are in good standing with *UCLA Student Loan Services & Collections*. Loans of up to \$200 (\$350 with employment verification) are available through the *Loan Services Office*. Higher amount Financial Aid Advances require verification of anticipated current quarter/semester financial aid. All short-term loans are due in full on the 20th day of the following month. For further details, visit www.loans.ucla.edu/shorttermloan.html.



Scholarships

The UCLA Regents Scholarship is a highly competitive, merit-based scholarship that is available to entering freshmen and entering transfer students. Students are invited to compete for this scholarship based on demonstrated academic excellence, leadership and exceptional promise. The latest statistical data averages for freshmen Regents are as follows: GPA: 4.31, SAT Math: 759, SAT Reading: 742, SAT Writing: 744, Best subject: 792, Honors/AP: 22 units.

Freshmen are guaranteed \$2,000 per year for four years and transfer students are guaranteed \$2,000 per year for two years. Transfer students must have a cumulative GPA of 4.0 to be considered for a Regents scholarship. All students must be a resident of California and be a citizen or permanent resident of the U.S. For more information about the Regents Scholarship, go to www.fao.ucla.edu/regents.htm.

UCLA Achievement Scholarships are offered on the basis of academic excellence and financial need to the highest ranked students who are identified by the Admissions Office during the admissions process and who submit their financial aid application on time. UCLA Achievement Scholarship will replace eligible students' self-help (work-study and need-based loans) awards up to a maximum set each year*. This scholarship is renewable and will be offered for four years to students admitted as freshmen and for two years to students admitted as junior transfers as long as they continue to demonstrate need and are otherwise eligible to receive financial aid. **For 2011-2012, the UCLA Achievement Scholarship maximum was \$9,200.*

Alumni Scholarships are awarded to freshmen graduating from California high schools and entering transfer students from California Community Colleges. Freshmen must have a minimum 3.85 GPA and SAT I verbal score of 600/670 and a minimum SAT I math score of 600. Transfer students must have a minimum 3.5 GPA and 84 transferable quarter units. Financial need is not required. Awards range from \$500 to \$1,000.

University and Endowed Scholarships are awarded to academically meritorious and financially needy undergraduate students. A FAFSA application and scholarship application must be filed each year before March 2 to be considered for university and endowed scholarships. Awards range from \$100 to \$3,000 and are not automatically renewable. Continuing students must have a cumulative GPA of 3.5 or greater and must demonstrate financial need. For more information regarding UCLA scholarships go to www.fao.ucla.edu/scholarships/.

The Scholarship Resource Center (SRC) at UCLA assists students to search for non-university scholarships, regardless of their financial aid eligibility. Non-University Scholarships (Outside Agency Scholarships) are funds from various organizations, agencies, companies, or private individuals that are not administered by the University. Students must meet various agency restrictions which may include academic achievement, special talent, leadership ability, or group affiliation. The SRC offers a number of services to assist in the scholarship process – a library of scholarship books, counseling, search services, and workshops. The center is located at 233 Covell Commons and is open Monday through Friday, 11:00 a.m. to 6:00 p.m. You can also reach the center by calling (310) 206-2875. *Students who receive scholarships must notify the Financial Aid Office of the source and amount of funds. Scholarships are generally counted against need-based assistance in your financial aid package.*

Work-Study

Federal Work-Study (FWS) is a federally funded program administered by the Financial Aid Office. Eligibility is based upon demonstrated financial need and on-time application status. Both graduate and undergraduate students are considered. Students can work up to 20 hours per week and earn money for college costs through part-time employment in an approved on or off-campus job. Once you have accepted your award, it is your responsibility to review the online Work-Study job bulletin, contact employers, interview, and find a position by the hiring deadline (usually in February) in order to earn the funds provided through FWS.



MAINTAINING FINANCIAL AID ELIGIBILITY



Satisfactory Academic Progress (SAP)

Satisfactory Academic Progress (SAP) for financial aid purposes measures students' progress relative to their length of enrollment. The UCLA Financial Aid Office has revised the Standards for Satisfactory Academic Progress for 2012-2013 in accordance with new federal regulations. UCLA Standards for Satisfactory Academic Progress measure students' progress toward degree completion using both qualitative and quantitative methods. To be eligible for financial aid at UCLA, students must meet or exceed these standards. The standards apply to all college coursework taken, regardless of whether financial aid was received or not, including coursework transferred from another institution. Academic progress is reviewed annually after Spring Quarter grades are available. Students who fail to meet the Standards for Satisfactory Academic Progress will have their financial aid eligibility suspended. Please refer to the *2012-2013 Guide to Satisfactory Academic Progress* which is available on the Financial Aid Office website at www.fao.ucla.edu.

Quarterly Unit Requirements

In addition to the Satisfactory Academic Progress requirements, you must also adhere to the quarterly unit requirements. *The Financial Aid Office checks your units on the census date at the end of the third week of classes.* Enrollment below half time on that date will result in cancellation of your aid and billing for funds received. Half-time enrollment for an undergraduate student is six units. Some undergraduate awards (Federal Pell Grant, Cal Grant, Scholarship Recognition Award and University Grant) require enrollment in 12 units to maintain maximum eligibility. Enrollment below 12 units on the census date will result in reduction of and billing for these awards. **Federal Grants will not be reinstated if your unit count increases after the census date.** For a graduate student, the minimum unit requirement for half time is four units.



Withdrawals

If you receive financial aid and subsequently do not enroll in the University or enroll and then withdraw, you may be required to return financial aid funds received. The calculation of Return of Title IV funds received is based on published schedules and the date you withdraw (officially or unofficially), cancel your registration or drop all your classes. Title IV funds include Federal Pell Grant, SEOG, Work-Study and Federal Loans.



Grants funded from University sources (ex: University Grant, Blue and Gold Opportunity Award, Scholarship Recognition Award, etc.) will also be subject to reduction and billing, if you withdraw. The calculation of return of grant aid is based on published schedules and the date you withdraw, cancel your registration or drop all your classes.

Information regarding withdrawal calculations is available on our web site at <http://www.fao.ucla.edu/publications.html> under 'What Happens to the Financial Aid if I Withdraw?'

If you are a CAL Grant recipient and you receive a fee refund based on a withdrawal, your CAL Grant award will also be reduced.

Accreditation Statement

UCLA is accredited by the Western Association of Schools and Colleges along with numerous special agencies. Information regarding the University's accreditation may be obtained in the Office of Budget and Planning, Institutional Planning Analysis Library.

Privacy All student records are strictly confidential. Even if you have signed waivers of access to your file, you are not required to tell anyone about any information contained therein.

UCLA, in compliance with Titles VI and VII of the Civil Rights Act of 1964, Title IX of the Education Amendments of 1972, and the Rehabilitation Act of 1973, does not discriminate on the basis of race, creed, color, national origin, mental or physical handicap, age, sexual orientation or gender in any of its policies, practices or procedures. This includes, but is not limited to admissions, employment, financial aid, educational services, programs and activities.

DIRECTORY

<p><i>California Student Aid Commission</i> (888) CA GRANT P.O. Box 510845 Sacramento, CA 94245-0845 www.csac.ca.gov</p>	<p><i>Graduate Student Support</i> (310) 825-1025 1228 Murphy Hall</p>	<p><i>Scholarship Resource Center</i> (310) 206-2875 233 Covell Commons src@college.ucla.edu</p>
<p><i>Direct Loan Processor</i> (800) 848-0979 www.StudentLoans.gov</p>	<p><i>Student Loan Services</i> (310) 825-9864 A-227 Murphy Hall</p>	<p><i>Federal Processor (FAFSA)</i> (800) 433-3243 www.fafsa.gov</p>